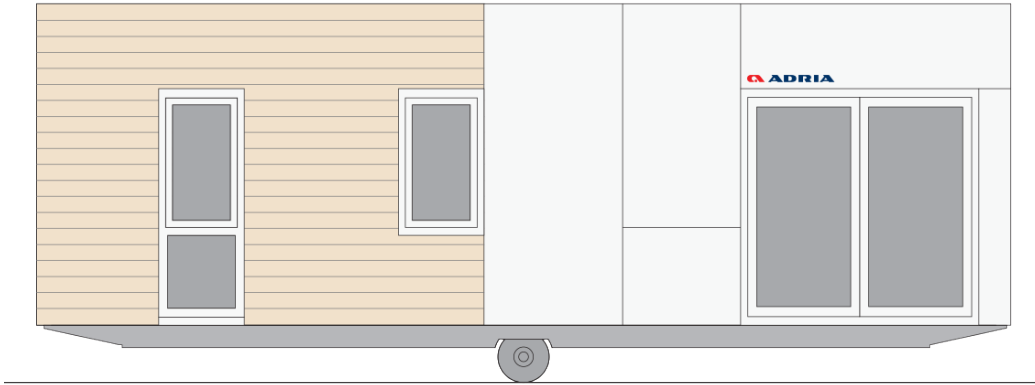
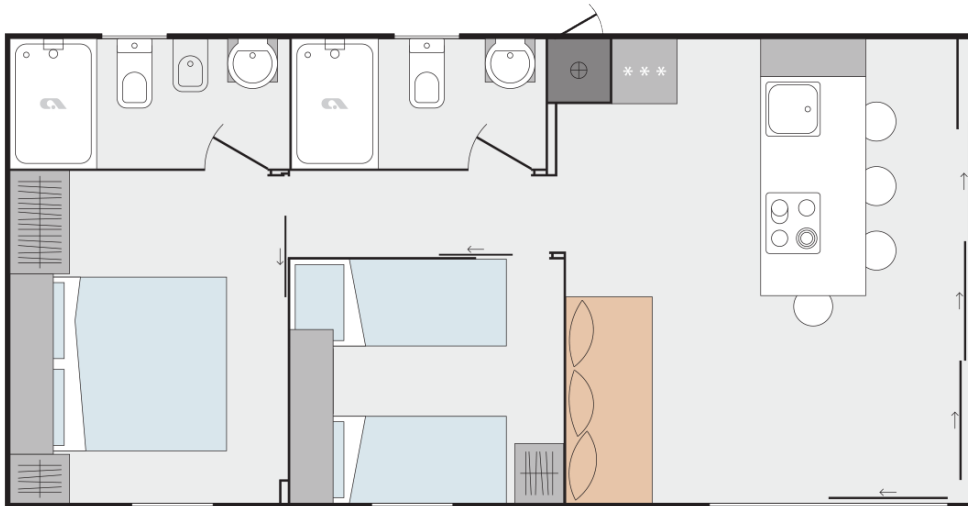


# Xline 905 R22

**Facade:**



**Layout:**



**A1 GENERAL**

|                     |       |
|---------------------|-------|
| Area                | 40,50 |
| Number of beds      | 4+1   |
| Number of bedrooms  | 2     |
| Number of bathrooms | 2     |
| Length              | 9,00  |
| Width               | 4,50  |
| Height              | 3,45  |

**B1 CHASSIS**

|                               |   |
|-------------------------------|---|
| 100% Galvanized Steel Chassis | X |
| Detachable hook               | X |
| Leveling Feet                 | X |
| Double inflatable wheels      | X |

**B2 FLOOR**

|   |   |
|---|---|
| Vynil flooring                          | X |
| Moisture resistant CTB-H flooring 19 mm | X |
| Floor insulation aluminium foil         | X |
| Adria Sandwich Technology ® Floor 40 mm | O |

**B3 EXTERIOR WALLS**

|   |   |
|---|---|
| Adria Sandwich Technology ®AST                  | X |
| Frontal Facade: Alucobond Reflect               | O |
| Frontal Facade: Alucobond Bronze                | O |
| Frontal Facade: Alucobond Grey                  | O |
| Frontal Facade: Alucobond Green                 | O |
| Cladding: Alucobond Reflect                     | ? |
| Corners: Color of cladding                      | X |
| Frontal Facade: Compact White F2010 Malibu      | O |
| Frontal Facade: Compact Anthracite F2297 Terril | O |
| Frontal Facade: Larchwood vertical              | X |
| Frontal Facade: Larchwood Blackline horizontal  | O |
| Frontal Facade: Larchwood Barcode vertical      | O |
| Cladding: Hard PVC Ivory SOFT FS-301 vertical   | X |

|   |   |
|---|---|
| Cladding: Hard PVC Mastic SOFT FS-301 vertical      | O |
| Cladding: Hard PVC Anthracite SOFT FS-301 vertical  | O |
| Cladding: Hard PVC Pearl Grey STONE FS-301 vertical | O |
| Cladding: Larchwood Vertical                        | O |
| Cladding: Larchwood Blackline horizontal            | O |
| Cladding: Hard Hard PVC White FS-201 horizontal     | O |
| Cladding: Hard PVC Light Grey FS-201 horizontal     | O |
| Cladding: Hard PVC Claystone FS-201 horizontal      | O |
| Cladding: Hard PVC Anthracite FS-201 horizontal     | O |
| Cladding: Hard PVC Silver Grey FS-201 horizontal    | O |
| Cladding: Hard PVC White FS-302 vertical            | O |
| Cladding: Hard PVC Claystone FS-302 vertical        | O |
| Cladding: Hard PVC Pearl Grey FS-302 vertical       | O |
| Cladding: Hard PVC Anthracite FS-302 vertical       | O |

#### **B4 WINDOWS AND DOORS**

|  |   |
|--|---|
| PVC white windows and doors with termopan glass      | X |
| PVC anthracite windows and doors with termopan glass | O |
| Tinted windows in bathrooms                          | X |
| Panoramic sliding entrance door with security glass  | X |
| PVC balcony door in bedroom with security glass      | O |
| Door holder  | O |
| Mosquito nets on all windows - white                 | O |
| Built-in blinds on all windows                       | O |
| Master cylinder                                      | O |
| Master key   | O |
| ALU door of external box                             | X |

#### **B5 ROOF AND CEILING**

|  |   |
|--|---|
| Single-pitched Roof                                | X |
| Roof construction class A (150 kg/m <sup>2</sup> ) | X |
| Roof construction class B (250 kg/m <sup>2</sup> ) | O |
| Galvanized steel roof                              | X |
| Roof colour: White                                 | X |
| Roof Colour: Anthracite                            | O |
| PVC foil   | X |

|   |   |
|---|---|
| Roof insulation glass wool 50 mm with   | X |
| Roof insulation glass wool 100 mm with  | O |
| Flat higher ceiling in all rooms 225 cm | X |
| Gutters                                 | X |
| Vertical draining pipes                 | X |
| Gutter guard for leaves                 | O |

**C0 INTERIOR**

|  |        |
|--|--------|
| Textile Combination 1                    | GOLD   |
| Textile Combination 2                    | SILVER |
| Furnishing Decor                         | LUXURY |
| Blackout curtains                        | X      |
| Daily curtains                           | O      |
| Upholstered headboard                    | X      |
| Upholstered lifting master bed           | O      |
| Bedsread in master bedroom               | O      |
| Interior separation walls 16 mm          | X      |
| Interior doors 40 mm with ALU doorframes | X      |
| Door stopper                             | X      |
| Metal doorhooks                          | X      |
| Soft close for furniture                 | X      |
| Cushions in living room                  | O      |
| Cushions in bedrooms                     | O      |

**C1 LIVING ROOM**

|                                     |   |
|-------------------------------------|---|
| Sofa                                | X |
| Sofa extendable                     | O |
| Footstool dinette sofa 550 x 550 mm | O |
| Coffee table                        | O |
| Barstools                           | X |
| Multimedia shelf                    | O |
| Wall decoartiv cladding             | O |
| Hangers                             | X |
| Mirror                              | X |
| Fire extinguisher                   | O |
| Fire blanket                        | O |

|                               |   |
|-------------------------------|---|
| Smoke detector                | O |
| Designer comfortable sofa     | O |
| Wall shelf over the sofa      | X |
| Wooden headboard for the sofa | X |

## C2 KITCHEN

|   |   |
|---|---|
| Glas ceramic hob with 4 burners             | O |
| Induction hob with 4 burners                | O |
| Built-in extractor hood                     | X |
| Stainless steel sink without drainer        | X |
| Built-in fridge with freezer 270 l          | X |
| Built-in dishwasher 450 mm                  | O |
| Gas hob on glass ceramic platform 4 burners | X |
| Built-in microwave oven                     | O |
| Built-in electrical oven                    | O |

## C3 MASTER BEDROOM

|   |           |
|---|-----------|
| Double bed with slatted bed base        | 160 x 200 |
| Foam mattresses (25 kg/m <sup>2</sup> ) | X         |
| Foam mattresses (35 kg/m <sup>2</sup> ) | O         |
| Ottoman upholstered bed                 | O         |
| Upholstered headboard                   | X         |
| Bedside tables                          | X         |
| Cupboards over the bed                  | X         |
| Wardrobe                                | X         |
| Hangers                                 | X         |
| Mirror                                  | X         |
| Safe in master bedroom                  | O         |
| Topper for mattresses                   | O         |

## C4 CHILDREN BEDROOM

|                                   |          |
|-----------------------------------|----------|
| Single beds with slatted bed base | 80 x 200 |
| Foam mattresses PN25              | X        |
| Foam mattresses HR35              | O        |
| Upholstered headboard             | X        |
| Bedside tables                    | X        |

|                         |   |
|-------------------------|---|
| Wardrobe                | X |
| Hangers                 | O |
| Mirror                  | O |
| Loft bed                | O |
| Underbed                | O |
| Wall shelf over the bed | O |

**C6 BATHROOM**

|  |          |
|--|----------|
| Shower cabin   | 80 x 120 |
| Shower sliding doors with security glass                               | X        |
| Shower PVC wall  | X        |
| Shower tower with mixer tap  | X        |
| Shower rail with adjustable sliding shower holder and rain shower head | X        |
| Wash-stand with mixer tap  | X        |
| Mirror with shelf  | X        |
| Shelf over the mirror  | X        |
| Ceramic toilet with toilet seat  | X        |
| Ceramic Toilet tank with saving function                               | X        |
| Built-in toilet tank with saving function                              | O        |
| Towel holder   | X        |
| Toilet roll holder   | X        |
| Hangers  | X        |
| Hairdryer  | O        |
| Bidet with mixer tap   | O        |

**C7 BATHROOM 2**

|  |          |
|--|----------|
| Shower tray                              | 80 x 120 |
| Shower sliding doors with security glass | X        |
| Shower PVC wall                          | X        |
| Shower tower with mixer tap              | X        |
| Wash-stand with mixer tap                | X        |
| Mirror with shelf                        | X        |
| Shelf over the mirror                    | X        |
| Ceramic toilet with toilet seat          | X        |
| Ceramic Toilet tank with saving function | X        |

|  |   |
|--|---|
| Built-in toilet tank with saving function                              | O |
| Towel holder   | X |
| Toilet roll holder   | X |
| Hangers  | X |
| Hairdryer  | O |
| Shower rail with adjustable sliding shower holder and rain shower head | X |

### D1 WATER AND GAS

|   |   |
|---|---|
| External connector to water facilities with | X |
| Connection to central warmwater system      | O |
| Connection to central wastewater system     | O |
| PVC water pipes Speedfit®                   | X |
| Central waste water outlet                  | O |
| Water filter                                | O |
| External access to water heater             | X |
| Gas water heater Vaillant 11l natural push  | X |
| Gas connection in box: Propan/Butan 30 mBar | X |
| External gas connection: Methan             | O |
| Electrical water heater 50l                 | O |
| Electrical water heater 80l                 | O |
| Electrical water heater 100l                | O |

### D2 ELECTRICITY

|   |   |
|---|---|
| Flush mounted installations, sockets and switches         | X |
| External connector 16A, 250V, 2P+E                        | X |
| External connection 16A, 400V, 3P+N+E                     | O |
| External connection 32A, 250V, 2P+E                       | O |
| External connection 32A, 400V, 3P+N+E                     | O |
| Awning LED light  | X |
| External socket   | X |
| Built-in ceiling spot LED lights in all rooms             | X |
| Reading LED lights in all rooms                           | X |
| Ambiental LED lightning in living room and sleeping rooms | O |
| LED lightning in kitchen                                  | X |
| Preinstallation for Airconditioning                       | O |



|   |                                  |
|---|----------------------------------|
| Key lock  | <input type="radio"/>            |
| Airco Card  | <input type="radio"/>            |
| Airco sensors for entrance door                   | <input type="radio"/>            |
| Airco sensors for all windows except bathrom      | <input type="radio"/>            |
| TV socket   | <input checked="" type="radio"/> |
| Additional TV and aerial socket in master bedroom | <input type="radio"/>            |
| USB socket  | <input type="radio"/>            |
| UTP socket  | <input type="radio"/>            |
| External socket anthracite                        | <input type="radio"/>            |
| External socket under chassis                     | <input type="radio"/>            |

### D3 MULTIMEDIA

|                                     |                       |
|-------------------------------------|-----------------------|
| TV holder                           | <input type="radio"/> |
| TV holder with double fold function | <input type="radio"/> |
| LED TV 32 inch                      | <input type="radio"/> |
| Adria Bluetooth sound system        | <input type="radio"/> |

### D4 HEATING AND COOLING

|  |                       |
|--|-----------------------|
| Air-conditioning - mono split                              | <input type="radio"/> |
| Electrical heater in living room                           | <input type="radio"/> |
| Electrical heater in bedrooms                              | <input type="radio"/> |
| Electrical towel heater in bathroom                        | <input type="radio"/> |
| Electrical underfloor heating system Ebecco ® in all rooms | <input type="radio"/> |
| Insulated water pipes with electrical heating              | <input type="radio"/> |
| Air-conditioning - duo split                               | <input type="radio"/> |

### E1 EXTERIOR EQUIPMENT

|         |                       |
|---------|-----------------------|
| Terrace | <input type="radio"/> |
|---------|-----------------------|

### E1 OPTION PACKAGES

|                   |                       |
|-------------------|-----------------------|
| Allseason Package | <input type="radio"/> |
| Smart Package     | <input type="radio"/> |
| Saftey Package    | <input type="radio"/> |

**Legal Notice**

The information on this website is provided "as is" and without warranty of any kind, expressed or implied, including (but not limited to) any implied warranties of merchantability and non-infringement of third party rights. While the information provided is believed to be accurate, it may include errors or inaccuracies. In no event shall Adria Home be liable to any person for any special, indirect or consequential damages relating to this material, unless caused by gross negligence or intentional misconduct. The purpose of this website is illustrative. The website may show visuals which may include some elements not belonging to the standard equipment or portray products which may not be available in all markets. Products may change in terms of technical specification and commercial details and in relation to specific regulations. You are advised to always contact your selected Adria representative to obtain all detailed information prior to purchasing.

**Copyright**

Copyright © Adria Home Ltd., ?nomelj, Slovenia 2019-20. All rights reserved. The text, images, graphics, sound files, animation files, video files, and their arrangement on the Adria Home website are all subject to copyright and other intellectual property protection. These objects may not be copied for commercial use or distribution, nor may these objects be modified or reposted to other sites. Adria Home website may contain images whose copyrights are attributable to third parties.



Adria Home Ltd.  
Kanižarica 41, SI-8340 ?nomelj, Slovenija, Tel: +386 (0) 7 35 69 100, E-mail: info@adria-mobilehome.com  
[www.adria-mobilehome.com](http://www.adria-mobilehome.com) , [www.adria-holidays.net](http://www.adria-holidays.net)

#AdriaHome  
#AdriaGlamping

