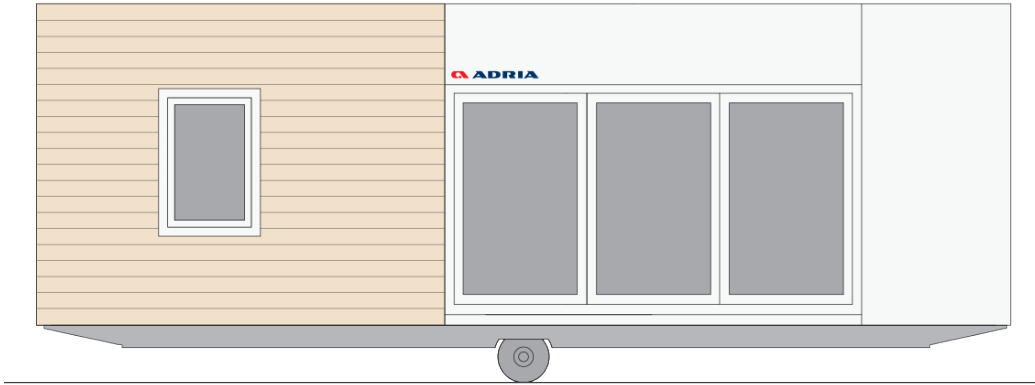
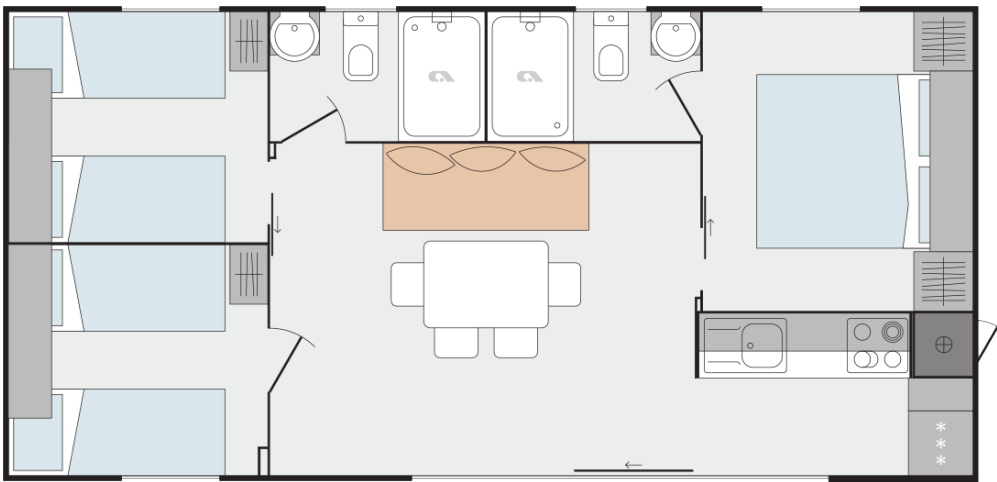


Xline 905 F32

Facade:



Layout:



C1 LIVING ROOM

Wall decoartiv cladding	O
Sofa	X
Sofa extendable	O
Designer comfortable sofa	O
Footstool dinette sofa 550 x 550 mm	O
Dinning table	X
Coffee table	O
Chairs	X
Wall shelf over the sofa	X
Multimedia shelf	O
Hangers	X
Mirror	X
Fire extinguisher	O
Fire blanket	O
Smoke detector	O
Wooden headboard for the sofa	X

A1 GENERAL

Area	40,50
Number of beds	6+1
Number of bedrooms	3
Number of bathrooms	2
Lenght	9,00
Width	4,5
Height	3,45

B1 CHASSIS

100% Galvanized Steel Chassis	X
Detachble hook	X
Leveling Feet	X
Double inflatable wheels	X

B2 FLOOR

Vynil flooring	X
----------------	---

Moisture resistant CTB-H flooring 19 mm	X
Floor insulation aluminium foil	X
Adria Sandwich Technology ® Floor 40 mm	O

B3 EXTERIOR WALLS

Adria Sanwdich Technology ®AST	X
Frontal Facade: Alucobond Reflect	O
Frontal Facade: Alucobond Bronze	O
Frontal Facade: Alucobond Grey	O
Frontal Facade: Alucobond Green	O
Frontal Facade: Compact White F2010 Malibu	O
Frontal Facade: Compact Anthracite F2297 Terril	O
Frontal Facade: Larchwood vertical	X
Frontal Facade: Larchwood Blackline horizontal	O
Frontal Facade: Larchwood Barcode vertical	O
Cladding: Hard PVC Ivory SOFT FS-301 vertical	X
Cladding: Hard PVC Mastic SOFT FS-301 vertical	O
Cladding: Hard PVC Anthracite SOFT FS-301 vertical	O
Cladding: Hard PVC Pearl Grey STONE FS-301 vertical	O
Cladding: Larchwood Vertical	O
Cladding: Larchwood Blackline horizontal	O
Corners: Color of cladding	X
Cladding: Hard PVC Silver Grey FS-201 horizontal	O
Cladding: Hard PVC Anthracite FS-201 horizontal	O
Cladding: Hard PVC Claystone FS-201 horizontal	O
Cladding: Hard PVC Light Grey FS-201 horizontal	O
Cladding: Hard Hard PVC White FS-201 horizontal	O
Cladding: Hard PVC Anthracite FS-302 vertical	O
Cladding: Hard PVC Pearl Grey FS-302 vertical	O
Cladding: Hard PVC Claystone FS-302 vertical	O
Cladding: Hard PVC White FS-302 vertical	O
Portico: Compact White F2010 Malibu	O
Portico: Compact Anthracite F2297 Terril	O

B4 WINDOWS AND DOORS

PVC white windows and doors with termopan glass	X
---	---

PVC anthracite windows and doors with termopan glass	O
Tinted windows in bathrooms	X
Panoramic sliding entrance door with security glass	X
PVC balcony door in bedroom with security glass	O
Mosquito nets on all windows - white	O
Built-in blinds on all windows	O
Master cylinder	O
Master key	O
ALU door of external box	X

B5 ROOF AND CEILING

Single-pitched Roof	X
Roof construction class A (150 kg/m ²)	X
Roof construction class B (250 kg/m ²)	O
Galvanized steel roof	X
Roof colour: White	X
Roof Colour: Anthracite	O
PVC foil	X
Roof insulation glass wool 50 mm with	X
Roof insulation glass wool 100 mm with	O
Flat higher ceiling in all rooms 225 cm	X
Gutters	X
Vertical draining pipes	X
Gutter guard for leaves	O

C0 INTERIOR

Textile Combination 1	GOLD
Textile Combination 2	SILVER
Furnishing Decor	LUXURY
Blackout curtains	X
Daily curtains	O
Upholstered headboard	X
Upholstered lifting master bed	O
Bedsread in master bedroom	O
Interior separation walls 16 mm	X
Interior doors 40 mm with ALU doorframes	X

Door stopper	X
Metal doorhooks	X
Soft close for furniture	X
Cushions in living room	O
Cushions in bedrooms	O

C2 KITCHEN

Gas hob on glass ceramic platform 4 burners	X
Glas ceramic hob with 4 burners	O
Induction hob with 4 burners	O
Built-in extrator hood	X
Stainless steel sink with drainer	X
Built-in frdige with freezer 270 l	X
Built-in dishwasher 450 mm	O
Built-in drainer (scolapiatti)	O
Kitchen backsplash: White wall panel	X
Built-in microwave oven	O
Built-in electrical oven	O

C3 MASTER BEDROOM

Double bed with slatted bed base	160 x 200
Foam mattresses (25 kg/m2)	X
Foam mattresses (35 kg/m2)	O
Ottoman upholstered bed	O
Upholstered headboard	X
Bedside tables	X
Cupboards over the bed	X
Wardrobe	X
Hangers	X
Mirror	X
Safe in master bedroom	O
Topper for mattresses	O

C4 CHILDREN BEDROOM

Single beds with slatted bed base	80 x 200
Foam mattresses PN25	X

Foam mattresses HR35	O
Loft bed	O
Underbed	O
Upholstered headboard	X
Bedside tables	X
Wall shelf over the bed	X
Cupboards over the bed	O
Wardrobe	X
Hangers	O
Mirror	O

C5 CHILDREN BEDROOM 2

Single beds with slatted bed base	80 x 200
Foam mattresses PN25	X
Foam mattresses HR35	O
Loft bed	O
Underbed	O
Upholstered headboard	X
Bedside tables	X
Wall shelf over the bed	X
Cupboards over the bed	O
Wardrobe	X
Hangers	O
Mirror	O

C6 BATHROOM

Shower cabin	80 x 120
Shower sliding doors with security glass	X
Shower PVC wall	X
Shower tower with mixer tap	X
Shower rail with adjustable sliding shower holder and rain shower head	X
Wash-stand with mixer tap	X
Mirror with shelf	X
Shelf over the mirror	X
Ceramic toilet with toilet seat	X

Cheramic Toilet tank with saving function	X
Built-in toilet tank with saving function	O
Towel holder	X
Toilet roll holder	X
Hangers	X
Hairdryer	O

C7 BATHROOM 2

Shower tray	80 x 120
Shower sliding doors with security glass	X
Shower PVC wall	X
Shower tower with mixer tap	X
Shower rail with adjustable sliding shower holder and rain shower head	X
Wash-stand with mixer tap	X
Mirror with shelf	X
Shelf over the mirror	X
Cheramic toilet with toilet seat	X
Cheramic Toilet tank with saving function	X
Built-in toilet tank with saving function	O
Towel holder	X
Toilet roll holder	X
Hangers	X
Hairdryer	O

D1 WATER AND GAS

External connector to water facilities with	X
Connection to central warmwater system	O
Connection to central wastewater system	O
PVC water pipes Speedfit®	X
Central waste water outlet	O
Water filter	O
External access to water heater	X
Gas water heater Vaillant 11l natural push	X
Gas connection in box: Propan/Butan 30 mBar	X
External gas connection: Methan	O

Electrical water heater 50l	O
Electrical water heater 80l	O
Electrical water heater 100l	O

D2 ELECTRICITY

Flush mounted installations, sockets and switches	X
External connector 16A, 250V, 2P+E	X
External connection 16A, 400V, 3P+N+E	O
External connection 32A, 250V, 2P+E	O
External connection 32A, 400V, 3P+N+E	O
Awning LED light	X
External socket	X
External socket anthracite	O
External socket under chassis	O
Built-in ceiling spot LED lights in all rooms	X
Reading LED lights in all rooms	X
Ambiental LED lightning in living room and sleeping rooms	O
LED lightning in kitchen	X
Preinstallation for Airconditioning	O
Key lock	O
Airco Card	O
Airco sensors for entrance door	O
Airco sensors for all windows except bathrom	O
TV socket	X
Additional TV and aerial socket in master bedroom	O
USB socket	O
UTP socket	O

D3 MULTIMEDIA

TV holder	O
TV holder with double fold function	O
LED TV 32 inch	O
Adria Bluetooth sound system	O

D4 HEATING AND COOLING

Air-conditioning - mono split	O
-------------------------------	---

Electrical heater in living room	<input type="radio"/>
Electrical heater in bedrooms	<input type="radio"/>
Electrical towel heater in bathroom	<input type="radio"/>
Electrical underfloor heating system Ebecco ® in all rooms	<input type="radio"/>
Insulated water pipes with electrical heating	<input type="radio"/>
Air-conditioning - duo split	<input type="radio"/>

E1 OPTION PACKAGES

Allseason Package	<input type="radio"/>
Smart Package	<input type="radio"/>
Safety Package	<input type="radio"/>

E1 EXTERIOR EQUIPMENT

Terrace	<input type="radio"/>
---------	-----------------------

Legal Notice

The information on this website is provided "as is" and without warranty of any kind, expressed or implied, including (but not limited to) any implied warranties of merchantability and non-infringement of third party rights. While the information provided is believed to be accurate, it may include errors or inaccuracies. In no event shall Adria Home be liable to any person for any special, indirect or consequential damages relating to this material, unless caused by gross negligence or intentional misconduct. The purpose of this website is illustrative. The website may show visuals which may include some elements not belonging to the standard equipment or portray products which may not be available in all markets. Products may change in terms of technical specification and commercial details and in relation to specific regulations. You are advised to always contact your selected Adria representative to obtain all detailed information prior to purchasing.

Copyright

Copyright © Adria Home Ltd., ?nomelj, Slovenia 2019-20. All rights reserved. The text, images, graphics, sound files, animation files, video files, and their arrangement on the Adria Home website are all subject to copyright and other intellectual property protection. These objects may not be copied for commercial use or distribution, nor may these objects be modified or reposted to other sites. Adria Home website may contain images whose copyrights are attributable to third parties.



Adria Home Ltd.
Kanižarica 41, SI-8340 ?nomelj, Slovenija, Tel: +386 (0) 7 35 69 100, E-mail: info@adria-mobilehome.com
www.adria-mobilehome.com , www.adria-holidays.net

#AdriaHome
#AdriaGlamping

