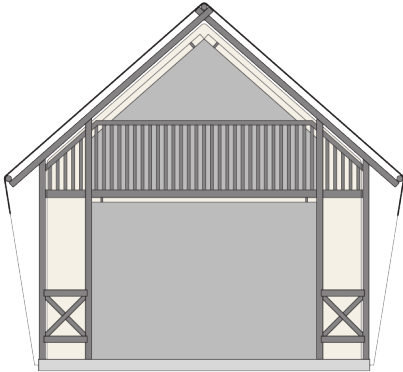


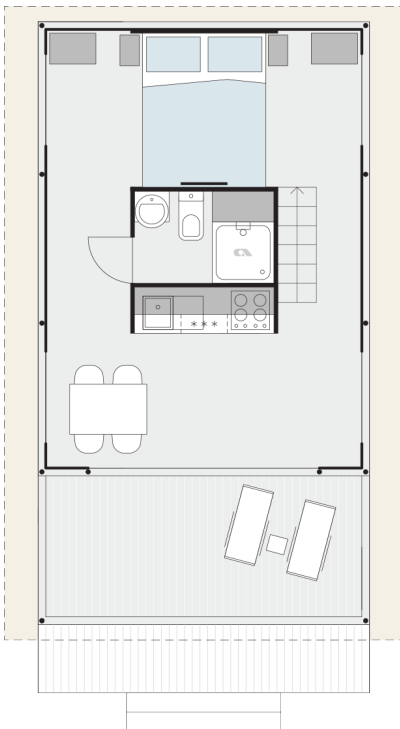


Safari M LOFT COMFORT+

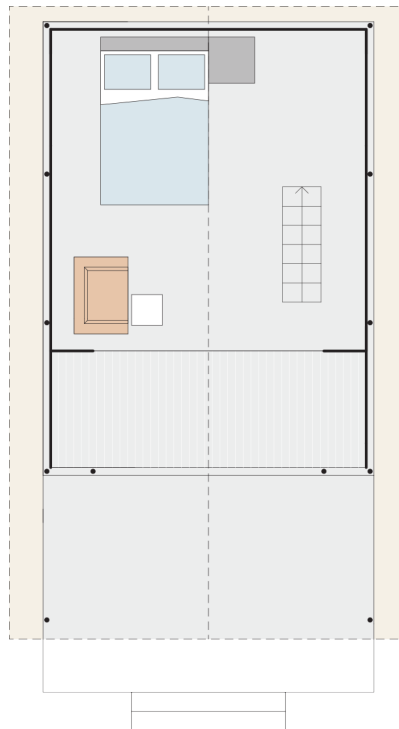
Facade:



Layout:



Layout 2:



A1 GENERAL

Length interior/exterior	5,68/8,43
Width interior/exterior	4,09/4,92
Height interior/exterior	2,05/5,24
Number of beds	4
Number of bedrooms	2
Number of bathrooms	1
Bathroom	X
Kitchen	X
Loft bedroom	X
Length	5,9
Width	2,4
Height	2,4
Area	31,20+23
Transport length	5,68
Transport width	2,28
Transport height	2,4
Dimension terrace	4,09x1,91

B1 CHASSIS

Single inflatable wheels	O
Wheels for container	O
Detachable hook	O
Leveling Feet	X
Anchoring Kit - Steel rod	O
Anchoring Kit - Steel anchor	O
Powder coated steel chassis	X

B2 FLOOR

Vynil flooring	X
Moisture resistant CTB-H flooring 19 mm	X

B3 EXTERIOR WALLS

PVC transport protection	X
Chassis cover PVC 15cm	X

Mosquito net preinstalation on entrance doors	X
Chassis cover Campshield FR1 15CM	O
Chassis cover PVC 50cm	O
Chassis cover PVC 35cm	O
Chassis cover Campshield FR1 35cm	O
Chassis cover Campshield FR1 50cm	O
Sturdy round wooden beams fi 100 mm	X
Powder coated steel connectors	X
Roof canvas Sattler Complain 641 670g/m2 (FR)	X
Roof canvas TenCate Campshield FR1 420g/m2 (FR)	O
Interior canvas TenCate Cotton KD24 340g/m2	X
Interior canvas TenCate Campshield FR2 290g/m2 (FR)	O
Window with mosquito net	X
Internal canvas rolo	X
External cristal PVC rolo with Vecro tape	X
Front entrance opening secton on zipper	X
Side wall opening sections on zipper	O
Mosquito net for entrance opening	O
Pad lock system	X
Master key for pad lock system	O
Winter cover	O

C0 INTERIOR

Textile Combination 1	TENT
Furnishing Decor	GOLD CRAFT OAK
Cushions in living room	O
Cushions in bedrooms	O
Bedsread in master bedroom	O
Interior doors 25mm	X
Interior partition walls	X
Partition curtains	O
Mosquito net for beds	O

C1 LIVING ROOM

Sofa bed extendable	-
---------------------	---

Dinning table	X
Coffee table	O
Transparent glass for dinning table	O
Chairs	X
Mirror	X
Fire extinguisher	O
Fire blanket	O
Smoke detector	O

C2 KITCHEN

Kitchen unit with 3 modules and hanging cupboards	X
Glas ceramic hob with 4 burners	X
Glas ceramic hob with 2 burners	O
Sink with drainer	X
Built-in integreted refridgirator with freezer 130l	X
Kitchen backsplash: White wall panel	O

C3 MASTER BEDROOM

Double bed with slatted bed base	160x200
Foam mattresses (25 kg/m2)	X
Foam mattresses (35 kg/m2)	O
Ottoman upholstered bed	O
Topper for mattresses	O
Upholstered headboard	O
Bedside tables	X
Wardrobe	X
Safe in master bedroom	O

C5 CHILDREN BEDROOM 2

Single beds with slatted bed base	160x200
Foam mattresses PN25	X
Foam mattresses HR35	O
Topper for mattresses	O
Wooden Ladder	LESENE STOPNICE
Bedside tables	X

Safety fence	X
--------------	---

C6 BATHROOM

Shower cabin	90x75
Shower swing doors with security glass	X
Shower PVC wall	X
Shower rail with sliding shower holder	X
Wash-stand with mixer tap	X
Mirror with shelf	X
Ceramic toilet with toilet seat	X
PVC toilet tank with saving function	X
Towel holder	X
Toilet roll holder	X
Hangers	X
Hairdryer	O

D1 WATER AND GAS

External connector to water facilities with	X
PVC water pipes Speedfit®	X
Central waste water outlet	O
Water filter	O
Electrical water heater 50l	X

D2 ELECTRICITY

Flush mounted installations, sockets and switches	X
External connection 32A, 250V, 2P+E	X
Reading LED lights in all rooms	O
Ambiental LED lightning in living room and sleeping rooms	O
Extractor fan in bathroom	X
TV socket	X
USB socket	X
UTP socket	O

D3 MULTIMEDIA

TV holder	O
TV holder with double fold function	O

LED TV 32 inch	O
Adria Bluetooth sound system	O

D4 HEATING AND COOLING

Air-conditioning - mono split	O
Electrical heater in living room	O
Electrical towel heater in bathroom	O
Insulated water pipes with electrical heating	O
Electrical underfloor heating system Ebecco ® in all rooms	O

E1 EXTERIOR EQUIPMENT

Terrace from Larchwood	X
Extended terrace from Larchwood	O
Stairs on the whole lenght	O
Table with chairs	O
Lounge furniture with two chairs and coffe table	O
Sun loungers (2 pcs)	O

Legal Notice

The information on this website is provided "as is" and without warranty of any kind, expressed or implied, including (but not limited to) any implied warranties of merchantability and non-infringement of third party rights. While the information provided is believed to be accurate, it may include errors or inaccuracies. In no event shall Adria Home be liable to any person for any special, indirect or consequential damages relating to this material, unless caused by gross negligence or intentional misconduct. The purpose of this website is illustrative. The website may show visuals which may include some elements not belonging to the standard equipment or portray products which may not be available in all markets. Products may change in terms of technical specification and commercial details and in relation to specific regulations. You are advised to always contact your selected Adria representative to obtain all detailed information prior to purchasing.

Copyright

Copyright © Adria Home Ltd., ?rnomej, Slovenia 2019-20. All rights reserved. The text, images, graphics, sound files, animation files, video files, and their arrangement on the Adria Home website are all subject to copyright and other intellectual property protection. These objects may not be copied for commercial use or distribution, nor may these objects be modified or reposted to other sites. Adria Home website may contain images whose copyrights are attributable to third parties.



Adria Home Ltd.
Kanižarica 41, SI-8340 ?rnomej, Slovenija, Tel: +386 (0) 7 35 69 100, E-mail: info@adria-mobilehome.com
www.adria-mobilehome.com , www.adria-holidays.net

#AdriaHome
#AdriaGlamping

