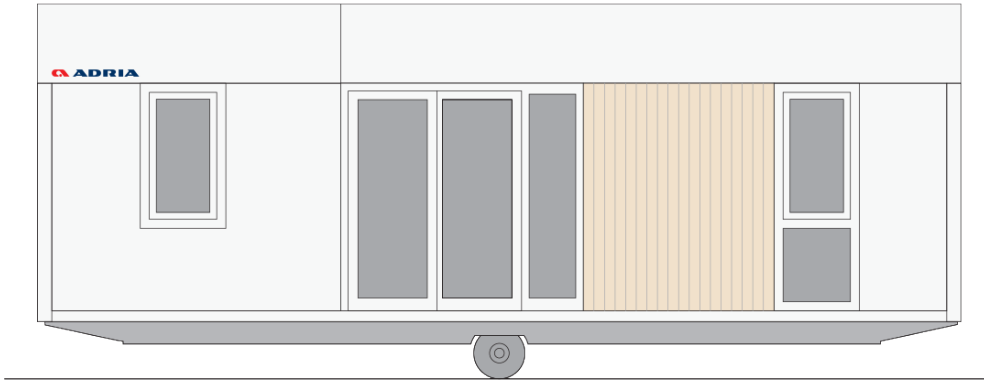
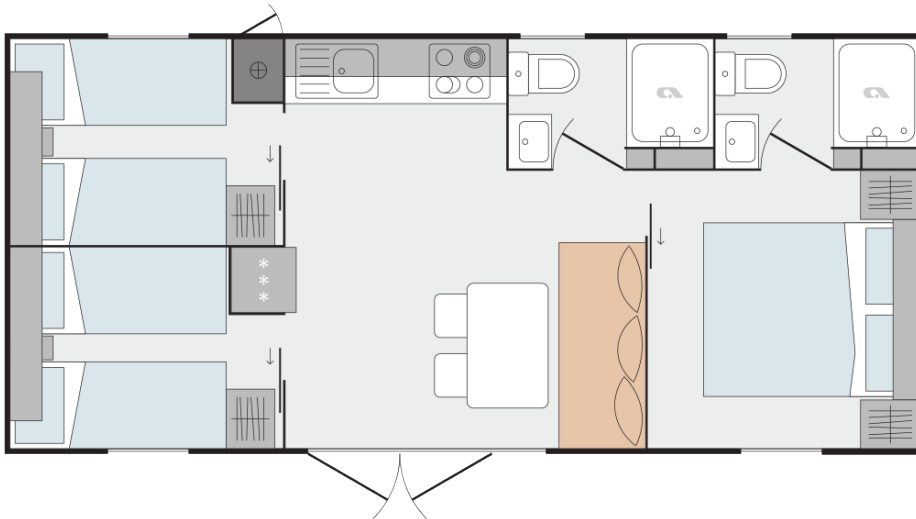


# Mline 854 B32

**Facade:**



**Layout:**



**A1 GENERAL**

Area	34,00
Number of beds	6+1
Number of bedrooms	3
Number of bathrooms	2
Length	8,50
Width	4,00
Height	3,45

**B1 CHASSIS**

100% Galvanized Steel Chassis	X
Single inflatable wheels	X
Detachable hook	X
Leveling Feet	X

**B2 FLOOR**

Vynil flooring	X
Moisture resistant CTB-H flooring 19 mm	X
Floor insulation aluminium foil	X
Adria Sandwich Technology ® Floor 40 mm	O

**B3 EXTERIOR WALLS**

Adria Sandwich Technology ®AST	X
Attic: White panel	X
Attic: Anthracite panel	O
Facade L/R: Facade VANILLA Jub Family 325	X
Facade L/R: Facade GREEN Jub Vitality 115	O
Facade L/R: Facade BLUE Jub Vitality 20	O
Facade L/R: Facade BROWN GREY Jub Family 15	O
Decorative Cladding: White Panel	O
Decorative Cladding: Larchwood vertical	X
Decorative Cladding: Larchwood Blackline horizontal	O
Cladding: Vnyl Silver Cedar vertical	X
Cladding: Vinyl Snowy Oak vertical	O
Cladding: Hard PVC White FS-302 vertical	O

Cladding: Hard PVC Claystone FS-302 vertical	O
Cladding: Hard PVC Pearl Grey FS-302 vertical	O
Cladding: Hard PVC Anthracite FS-302 vertical	O
Cladding: Facade VANILLA Jub Family 325	O
Cladding: Facade GREEN Jub Vitality 115	O
Cladding: Facade BLUE Jub Vitality 20	O
Cladding: Facade BROWN GREY Jub Family 15	O
Cladding: Larchwood Vertical	O
Cladding: Larchwood Blackline horizontal	O
Corners: White	O
Corners: Anthracite	O
Corners: Color of cladding	X

#### **B4 WINDOWS AND DOORS**

PVC white windows and doors with termopan glass	X
PVC anthracite windows and doors with termopan glass	O
Tinted windows in bathrooms	X
Swing entrance door with security glass	X
Panoramic sliding entrance door with security glass	O
PVC balcony door in bedroom with security glass	O
Door holder	X
Mosquito nets on all windows - white	O
Built-in blinds on all windows	O
Rolo shutters on bathroom windows	O
Master cylinder	O
Master key	O
ALU door of external box	X

#### **B5 ROOF AND CEILING**

Single-pitched Roof	X
Roof construction class A (150 kg/m <sup>2</sup> )	X
Roof construction class B (250 kg/m <sup>2</sup> )	O
Galvanized steel roof	X
Roof colour: White	X
Roof Colour: Anthracite	O
PVC roof	O

PVC foil	X
Roof insulation glass wool 50 mm with	X
Roof insulation glass wool 100 mm with	O
Flat heigher ceiling in all rooms 225 cm	X
Gutters	X
Vertical draining pipes	O
Gutter guard for leaves	O

**C0 INTERIOR**

Textile Combination 1	SKY
Textile Combination 2	LATTE
Furnishing Decor	STYLE
Blackout curtains	X
Daily curtains	O
Upholsered headboard	O
Upholsered lifting master bed	O
Bedsread in master bedroom	O
Interior separation walls 16 mm	X
Interior doors 25 mm with PVC doorframes	X
Door stopper	X
Metal doorhooks	X
Soft close for furniture	O
Cushions in living room	O
Cushions in bedrooms	O

**C1 LIVING ROOM**

Sofa	X
Sofa extendable	O
Footstool dinette sofa 550 x 550 mm	O
Dinning table	X
Coffee table	O
Chairs	X
Multimedia shelf	O
Wall decoartiv cladding	O
Hangers	X
Mirror	X

Fire extinguisher	O
Fire blanket	O
Smoke detector	O
Wooden headboard for the sofa	X

## C2 KITCHEN

Gas hob with 3+1 electrical burner	O
Gas hob on glass ceramic platform 4 burners	X
Glas ceramic hob with 4 burners	O
Induction hob with 4 burners	O
Built-in extrator hood	X
Stainless steel sink with drainer	X
Selfstanding grey fridge with freezer 217l	X
Built-in dishwasher 450 mm	O
Microwave oven	O
Built-in drainer (scolapiatti)	O
Kitchen backsplash: White wall panel	X

## C3 MASTER BEDROOM

Double bed with slatted bed base	160 x 200
Foam mattresses (25 kg/m <sup>2</sup> )	X
Foam mattresses (35 kg/m <sup>2</sup> )	O
Ottoman upholstered bed	O
Wooden headboard	X
Upholstered headboard	O
Bedside tables	X
Wall shelf over the bed	X
Cupboards over the bed	O
Wardrobe	X
Hangers	O
Mirror	X
Safe in master bedroom	O

## C4 CHILDREN BEDROOM

Single beds with slatted bed base	80 x 200
Foam mattresses PN25	X

Foam mattresses HR35	O
Loft bed	O
Underbed	O
Wooden headboard	X
Upholstered headboard	O
Bedside tables	X
Wall shelf over the bed	X
Cupboards over the bed	O
Wardrobe	X
Hangers	O
Mirror	O

### C6 BATHROOM

Shower cabin	80 x 100
Shower folding doors with security glass	X
Shower PVC wall	X
Shower rail with sliding shower holder	X
Shower rail with adjustable sliding shower holder and rain shower head	O
Wash-stand with mixer tap	X
Mirror with shelf	X
Extra shelves	X
Ceramic toilet with toilet seat	X
PVC toilet tank with saving function	X
Built-in toilet tank with saving function	O
Toilet roll holder	X
Hangers	X
Hairdryer	O
Towel holder	X

### C7 BATHROOM 2

Shower tray	80 x 100
Shower folding doors with security glass	X
Shower PVC wall	X
Shower rail with sliding shower holder	X

Shower rail with adjustable sliding shower holder and rain shower head	O
Wash-stand with mixer tap	X
Mirror with shelf	X
Extra shelves	X
Ceramic toilet with toilet seat	X
PVC toilet tank with saving function	X
Built-in toilet tank with saving function	O
Toilet roll holder	X
Hangers	X
Hairdryer	O
Towel holder	X

## D1 WATER AND GAS

External connector to water facilities with	X
Connection to central warmwater system	O
Connection to central wastewater system	O
PVC water pipes Speedfit®	X
Central waste water outlet	O
Water filter	O
External access to water heater	X
Gas water heater Vaillant 11l natural push	X
Gas connection in box: Propan/Butan 30 mBar	X
External gas connection: Methan	O
Electrical water heater 50l	O
Electrical water heater 80l	O
Electrical water heater 100l	O

## D2 ELECTRICITY

Flush mounted installations, sockets and switches	X
External connector 16A, 250V, 2P+E	X
External connection 16A, 400V, 3P+N+E	O
External connection 32A, 250V, 2P+E	O
External connection 32A, 400V, 3P+N+E	O
Awning LED light	X
External socket	X



External socket anthracite	O
External socket under chassis	O
Built-in ceiling spot LED lights in all rooms	X
Reading LED lights in all rooms	X
Ambiental LED lightning in living room and sleeping rooms	O
LED lightning in kitchen	O
Preinstallation for Airconditioning	O
Key lock	O
Airco Card	O
Airco sensors for entrance door	O
Airco sensors for all windows except bathrom	O
TV socket	X
Aditonal TV and aerial socket in master bedroom	O
USB socket	O
UTP socket	O

### D3 MULTIMEDIA

TV holder	O
TV holder with double fold function	O
LED TV 32 inch	O
Adria Bluetooth sound system	O

### D4 HEATING AND COOLING

Air-conditioning - mono split	O
Electrical heater in living room	O
Electrical heater in bedrooms	O
Electrical towel heater in bathroom	O
Electrical underfloor heating system Ebecco ® in all rooms	O
Insulated water pipes with electrical heating	O
Air-conditioning - duo split	O

### E1 EXTERIOR EQUIPMENT

Terrace	O
---------	---

### C5 CHILDREN BEDROOM 2

Single beds with slatted bed base	80 x 200
-----------------------------------	----------

Foam mattresses PN25	X
Foam mattresses HR35	O
Loft bed	O
Underbed	O
Wooden headboard	X
Upholstered headboard	O
Bedside tables	X
Wall shelf over the bed	X
Cupboards over the bed	O
Wardrobe	X
Hangers	O
Mirror	O

**Legal Notice**

The information on this website is provided "as is" and without warranty of any kind, expressed or implied, including (but not limited to) any implied warranties of merchantability and non-infringement of third party rights. While the information provided is believed to be accurate, it may include errors or inaccuracies. In no event shall Adria Home be liable to any person for any special, indirect or consequential damages relating to this material, unless caused by gross negligence or intentional misconduct. The purpose of this website is illustrative. The website may show visuals which may include some elements not belonging to the standard equipment or portray products which may not be available in all markets. Products may change in terms of technical specification and commercial details and in relation to specific regulations. You are advised to always contact your selected Adria representative to obtain all detailed information prior to purchasing.

**Copyright**

Copyright © Adria Home Ltd., ?nomelj, Slovenia 2019-20. All rights reserved. The text, images, graphics, sound files, animation files, video files, and their arrangement on the Adria Home website are all subject to copyright and other intellectual property protection. These objects may not be copied for commercial use or distribution, nor may these objects be modified or reposted to other sites. Adria Home website may contain images whose copyrights are attributable to third parties.



Adria Home Ltd.  
Kanižarica 41, SI-8340 ?nomelj, Slovenija, Tel: +386 (0) 7 35 69 100, E-mail: info@adria-mobilehome.com  
[www.adria-mobilehome.com](http://www.adria-mobilehome.com) , [www.adria-holidays.net](http://www.adria-holidays.net)

#AdriaHome  
#AdriaGlamping

