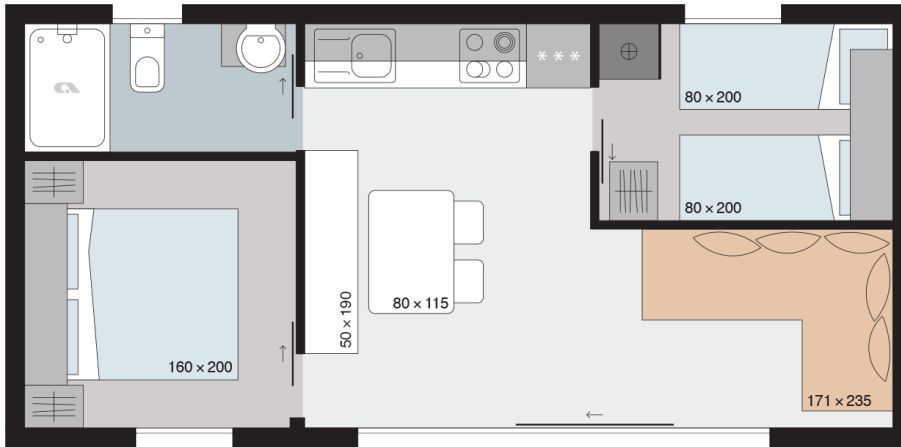




Aurora 855 B21

Layout:



Aurora 855 B21

A1 GENERAL

| | |
|---------------------|------|
| Area | 36,5 |
| Number of beds | 4+1 |
| Number of bedrooms | 2 |
| Number of bathrooms | 1 |
| Length | 8,5 |
| Width | 4,3 |
| Height | 3,45 |

B1 CHASSIS

| | |
|-------------------------------|---|
| 100% Galvanized Steel Chassis | X |
| Double inflatable wheels | X |
| Detachble hook | X |
| Leveling Feet | X |

B2 FLOOR

| | |
|---------------------------------------|---|
| Vynil flooring | X |
| Structural Insulated Panels SIP Floor | X |

B3 EXTERIOR WALLS

| | |
|---|---|
| Structural Insulated Panels SIP | X |
| Frontal Facade: Compact White F2010 Malibu | X |
| Frontal Facade: Compact Anthracite F2297 Terril | O |
| Frontal Facade: Larchwood Blackline horizontal | X |
| Cladding: Larchwood Blackline horizontal | X |
| Corners: Color of cladding | X |

B4 WINDOWS AND DOORS

| | |
|---|----------|
| PVC white windows and doors with termopan glass | X |
| Windows and doors with higher insulation | X |
| Tinted windows in bathrooms | X |
| Swing entrance door with security glass | X |
| PVC balcony door in kitchen with security glass | X,KRILNA |
| Door holder | X |
| Mosquito nets on all windows - white | O |

| | |
|---------------------------------|---|
| Built-in blinds on all windows | O |
| Rolo shutters on kitchen window | O |
| Master cylinder | O |
| Master key | O |

B5 ROOF AND CEILING

| | |
|--|---|
| Single-pitched Roof | X |
| Roof construction class E (600 kg/m ²) | X |
| Roof Colour: Anthracite | X |
| PVC roof | X |
| Roof insulation glass wool 200mm | X |
| Flat higher ceiling in all rooms 225 cm | X |
| Gutters | X |
| Vertical draining pipes | X |
| Gutter guard for leaves | O |

C0 INTERIOR

| | |
|--|--------|
| Textile Combination - STANDARD | MOOD |
| Furnishing Decor | NORDIC |
| Blackout curtains | X |
| Daily curtains | O |
| Cushions in living room | O |
| Cushions in bedrooms | O |
| Upholsered headboard | X |
| Upholsered lifting master bed | O |
| Bedsread in master bedroom | O |
| Double interior separation walls | X |
| Interior doors 40 mm with ALU doorframes | X |
| Door stopper | X |
| Metal doorhooks | X |
| Soft close for furniture | X |

C1 LIVING ROOM

| | |
|---|---|
| Sofa extendable | O |
| Dinette sofa extendable with upholstery | O |

| | |
|---------------------------|---|
| Designer comfortable sofa | X |
| Dinning table | X |
| Coffee table | O |
| Dinning bench | X |
| Chairs | O |
| Wall shelf over the sofa | X |
| Multimedia shelf | O |
| Hangers | X |
| Mirror | X |
| Fire extinguisher | O |
| Fire blanket | O |
| Smoke detector | O |

C2 KITCHEN

| | |
|---|---|
| Gas hob on glass ceramic platform 4 burners | X |
| Glas ceramic hob with 4 burners | O |
| Induction hob with 4 burners | O |
| Built-in extrator hood | X |
| Stainless steel sink with drainer | X |
| Stainless steel sink without drainer | O |
| Built-in frdige with freezer 270 l | X |
| Built-in dishwasher 450 mm | O |
| Built-in electrical oven | O |
| Microwave oven | O |
| Built-in drainer (scolapiatti) | O |
| Kitchen backsplash: White wall panel | X |

C3 MASTER BEDROOM

| | |
|---|-----------|
| Double bed with slatted bed base | 160 x 200 |
| Foam mattresses (25 kg/m ²) | X |
| Foam mattresses (35 kg/m ²) | O |
| Ottoman upholstered bed | O |
| Upholstered headboard | X |
| Bedside tables | X |
| Cupboards over the bed | X |

| | |
|------------------------|---|
| Wardrobe | X |
| Hangers | X |
| Mirror | X |
| Safe in master bedroom | O |

C4 CHILDREN BEDROOM

| | |
|-----------------------------------|----------|
| Single beds with slatted bed base | 80 x 200 |
| Loft bed | O |
| Foam mattresses PN25 | X |
| Foam mattresses HR35 | O |
| Underbed | O |
| Upholstered headboard | X |
| Bedside tables | X |
| Wall shelf over the bed | X |
| Cupboards over the bed | O |
| Wardrobe | X |
| Hangers | O |
| Mirror | O |

C6 BATHROOM

| | |
|--|----------|
| Shower cabin | 80 x 120 |
| Shower sliding doors with security glass | X |
| Shower PVC wall | X |
| Shower tower with mixer tap | X |
| Shower rail with adjustable sliding shower holder and rain shower head | X |
| Wash-stand with mixer tap | X |
| Wash-stand with two doors and mixer tap | O |
| Mirror with shelf | X |
| Shelf over the mirror | X |
| Ceramic toilet with toilet seat | X |
| Ceramic Toilet tank with saving function | X |
| Built-in toilet tank with saving function | O |
| Bidet with mixer tap | O |
| Towel holder | X |

| | |
|------------------------|---|
| Toilet roll holder | X |
| Hangers | X |
| Hairdryer | O |
| Washing machine 450 mm | O |

D1 WATER AND GAS

| | |
|---|---|
| External connector to water facilities with PVC water pipes Speedfit® | X |
| Central waste water outlet | O |
| Water filter | O |
| Internal access to water heater | X |
| Electrical water heater 50l | O |
| Electrical water heater 80l | X |
| Electrical water heater 100l | O |

D2 ELECTRICITY

| | |
|---|---|
| Flush mounted installations, sockets and switches | X |
| External connector 16A, 250V, 2P+E | X |
| External connection 16A, 400V, 3P+N+E | O |
| External connection 32A, 250V, 2P+E | O |
| External connection 32A, 400V, 3P+N+E | O |
| Awning LED light | X |
| External socket | X |
| External socket under chassis | O |
| Built-in ceiling spot LED lights in all rooms | X |
| Reading LED lights in all rooms | X |
| Ambiental LED lightning in living room and sleeping rooms | O |
| LED lightning in kitchen | X |
| Preinstallation for Airconditioning | O |
| Key lock | O |
| Airco Card | O |
| Airco sensors for entrance door | O |
| Airco sensors for all windows except bathrom | O |
| TV socket | X |
| Additional TV and aerial socket in master bedroom | O |

| | |
|------------|-----------------------|
| USB socket | <input type="radio"/> |
| UTP socket | <input type="radio"/> |

D3 MULTIMEDIA

| | |
|-------------------------------------|-----------------------|
| TV holder | <input type="radio"/> |
| TV holder with double fold function | <input type="radio"/> |
| LED TV 32 inch | <input type="radio"/> |
| Adria Bluetooth sound system | <input type="radio"/> |

D4 HEATING AND COOLING

| | |
|---|--------------------------|
| Air-conditioning - mono split | <input type="radio"/> |
| Electrical heater in living room | <input type="radio"/> |
| Electrical heater in bedrooms | <input type="radio"/> |
| Electrical towel heater in bathroom | <input type="radio"/> |
| IR heating system | <input type="checkbox"/> |
| Gas central heating system Intergas with radiators | <input type="radio"/> |
| Electrical underfloor heating system Ebecco ® in all rooms | <input type="radio"/> |
| Electrical underfloor heating system Ebecco - only bathroom | <input type="radio"/> |
| Fan with humidity and light sensor in bathroom | <input type="checkbox"/> |
| Window vents in all rooms | <input type="checkbox"/> |
| Insulated water pipes with electrical heating | <input type="radio"/> |

E1 OPTION PACKAGES

| | |
|-------------------|-----------------------|
| Allseason Package | <input type="radio"/> |
| Smart Package | <input type="radio"/> |
| Safety Package | <input type="radio"/> |

E1 EXTERIOR EQUIPMENT

| | |
|---------|-----------------------|
| Terrace | <input type="radio"/> |
|---------|-----------------------|

Legal Notice

The information on this website is provided "as is" and without warranty of any kind, expressed or implied, including (but not limited to) any implied warranties of merchantability and non-infringement of third party rights. While the information provided is believed to be accurate, it may include errors or inaccuracies. In no event shall Adria Home be liable to any person for any special, indirect or consequential damages relating to this material, unless caused by gross negligence or intentional misconduct. The purpose of this website is illustrative. The website may show visuals which may include some elements not belonging to the standard equipment or portray products which may not be available in all markets. Products may change in terms of technical specification and commercial details and in relation to specific regulations. You are advised to always contact your selected Adria representative to obtain all detailed information prior to purchasing.

Copyright

Copyright © Adria Home Ltd., ?rnatelj, Slovenia 2019-20. All rights reserved. The text, images, graphics, sound files, animation files, video files, and their arrangement on the Adria Home website are all subject to copyright and other intellectual property protection. These objects may not be copied for commercial use or distribution, nor may these objects be modified or reposted to other sites. Adria Home website may contain images whose copyrights are attributable to third parties.



Adria Home Ltd.
Kanižarica 41, SI-8340 ?rnatelj, Slovenija, Tel: +386 (0) 7 35 69 100, E-mail: info@adria-mobilehome.com
www.adria-mobilehome.com , www.adria-holidays.net

#AdriaHome
#AdriaGlamping

