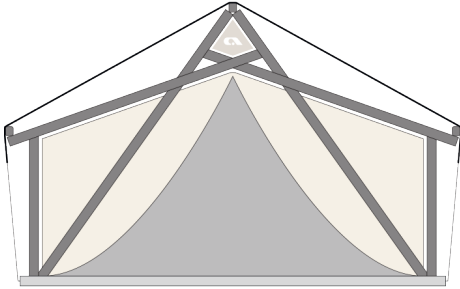


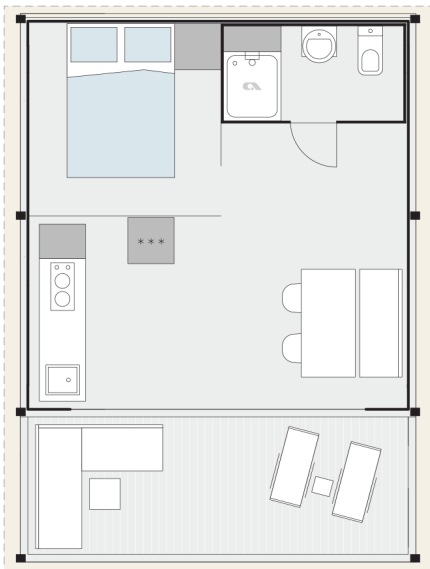


Adriatic M COUPLE

Facade:



Layout:



A1 GENERAL

Kitchen	X
Transport length	7,5
Transport width	2,28
Transport height	2,4
Dimension terrace	5,05x2,31
Length interior/exterior	5/7,5
Width interior/exterior	5,05/5,85
Height interior/exterior	2,63/3,63
Area	39,16
Number of beds	2
Number of bedrooms	1
Number of bathrooms	1
Bathroom	X
Loft bedroom	-

B1 CHASSIS

Wooden leveling feet 400mm	X
Leveling Feet	X
Anchoring Kit - Steel rod	O
Anchoring Kit - Steel ancor	O
Subframework of spruce wood	X

B2 FLOOR

Larchwood boards U-connect	X
----------------------------	---

B3 EXTERIOR WALLS

Mosquito net preinstalation on entrance doors	X
Wooden chassis cover Adriatic	O
Construction poles Pinewood BSH 100x120	X
Roof canvas Sattler Complain 641 670g/m2 (FR)	X
Roof canvas TenCate Solair KA46 420g/m2	O
Roof canvas TenCate Campshield FR1 420g/m2 (FR)	O
Interior canvas TenCate Cotton KD24 340g/m2	X
Interior canvas TenCate Campshield FR2 290g/m2 (FR)	O

Adriatic M COUPLE

Window with mosquito net	X
Internal canvas rolo	X
External cristal PVC rolo with Vecro tape	X
Front entrance opening secton on zipper	X
Mosquito net for entrance opening	O
Pad lock system	X
Master key for pad lock system	O
Winter cover	O
Stick for door zipper	X

C0 INTERIOR

Textile Combination 1	ADRIATIC
Interior walls Pinewood	X
Interior doors Pinewood	X
Furnishing Decor	ADRIATIC
Interior partition walls single	X
Mosquito net for beds	O
Cushions in living room	O
Cushions in bedrooms	O
Bedsread in master bedroom	O
Interior sliding doors - pinewood	X
Painted interior walls and furniture	O

C1 LIVING ROOM

Dinning table	X
Transparent glass for dinning table	O
Chairs	X, 2
Mirror	X
Fire extinguisher	O
Fire blanket	O
Smoke detector	O

C2 KITCHEN

Selfstanding grey fridge with freezer 217l	X
Glas ceramic hob with 2 burners	X
Kitchen unit with 3 modules	X

Adriatic M COUPLE

Stainless steel sink without drainer	X
Kitchen backsplash: Decorative laminate	X

C3 MASTER BEDROOM

Double bed with slatted bed base	160X200
Foam mattresses (25 kg/m ²)	X
Foam mattresses (35 kg/m ²)	O
Wardrobe	X
Safe in master bedroom	O
Bedside tables	X
Topper for mattresses	O

C6 BATHROOM

Shower cabin	90X75
Shower swing doors with security glass	X
Shower PVC wall	X
Shower rail with sliding shower holder	X
Wash-stand with mixer tap	X
Mirror with shelf	X
Ceramic toilet with toilet seat	X
PVC toilet tank with saving function	X
Towel holder	X
Toilet roll holder	X
Hangers	X
Hairdryer	O

D1 WATER AND GAS

External connector to water facilities with	X
PVC water pipes Speedfit®	X
Central waste water outlet	O
Water filter	O
Internal access to water heater	X
Electrical water heater 50l	X

D2 ELECTRICITY

Awning LED light	X
------------------	---

Adriatic M COUPLE

Ceiling track lightning with 4 spots in living room	X
Ceiling light in bedrooms	X
Ambiental LED lightning in living room and sleeping rooms	O
TV socket	X
USB socket	O
UTP socket	O
External connection 16A, 400V, 3P+N+E	O
External connection 32A, 250V, 2P+E	X
External connection 32A, 400V, 3P+N+E	O
Extractor fan in bathroom	X
Reading LED lights in all rooms	O

D3 MULTIMEDIA

TV holder	O
TV holder with double fold function	O
LED TV 32 inch	O
Adria Bluetooth sound system	O

D4 HEATING AND COOLING

Air-conditioning - mono split	O
Electrical heater in living room	O
Electrical heater in bedrooms	O
Electrical towel heater in bathroom	O
Airconditioning with air distribution in all rooms	O

E1 EXTERIOR EQUIPMENT

Covered terrace from Larchwood	X
Additional stair Adriatic	O
Lounge furniture with two chairs and coffe table	O
Sun loungers (2 pcs)	O
Exterior lounge set Adriatic	O
Two stairs Adriatic	X

Legal Notice

The information on this website is provided "as is" and without warranty of any kind, expressed or implied, including (but not limited to) any implied warranties of merchantability and non-infringement of third party rights. While the information provided is believed to be accurate, it may include errors or inaccuracies. In no event shall Adria Home be liable to any person for any special, indirect or consequential damages relating to this material, unless caused by gross negligence or intentional misconduct. The purpose of this website is illustrative. The website may show visuals which may include some elements not belonging to the standard equipment or portray products which may not be available in all markets. Products may change in terms of technical specification and commercial details and in relation to specific regulations. You are advised to always contact your selected Adria representative to obtain all detailed information prior to purchasing.

Copyright

Copyright © Adria Home Ltd., ?nomelj, Slovenia 2019-20. All rights reserved. The text, images, graphics, sound files, animation files, video files, and their arrangement on the Adria Home website are all subject to copyright and other intellectual property protection. These objects may not be copied for commercial use or distribution, nor may these objects be modified or reposted to other sites. Adria Home website may contain images whose copyrights are attributable to third parties.



Adria Home Ltd.
Kanižarica 41, SI-8340 ?nomelj, Slovenija, Tel: +386 (0) 7 35 69 100, E-mail: info@adria-mobilehome.com
www.adria-mobilehome.com , www.adria-holidays.net

#AdriaHome
#AdriaGlamping

